



The Maxim Series is a window operating “system” where the hinges and operators are developed to work together to meet or exceed the “maximum” performance requirements of larger more versatile casement and awning windows.

HANDLE & COVER OPTIONS

The Maxim Operators are available with a unique combination of aesthetic options.

- Standard is Maxim’s zinc die-cast case and handle. Each of which are available in a wide variety of standard and plated finishes.
- An optional Folding Handle can be added to minimize interference with window treatments, and a plastic nesting cover designed to cradle Truth’s Folding Handle is also available.
- The uniqueness of this Folding Handle and Nesting Cover combination is such that it allows the homeowner to easily change the color of their window hardware after the windows have been installed in the home.

SEALABLE HOUSING/GASKET

The Maxim Operator’s streamlined design helps:

- Reduce water/air infiltration and eliminates need for caulking.
- Minimize mounting surface damage in punching or routing of operator cut-out.
- Create a more stable mounting surface and improves seal endurance with its overlapping lip design.
- Enclosed gear train keeps dirt and construction debris out of the operator for smoother operation and longer life.

STANDARDIZATION OF PRODUCT & PROCESSES

- Allows manufacturer to use same operator mounting location on every window size whether it be a small window with a dyad operator or a larger window with a dual arm, thus helping to reduce manufacturing and inventory costs.
- Dual arm is specially designed to support both washability and egress applications while mounted in a consistent location.
- Brackets and track have been standardized and include features designed to reduce installation time.



Maxim® Dual Arm Operator with Folding Handle and Nesting Cover option shown

SMOOTH & EFFICIENT

- 33% less effort to operate than EntryGard style operators
- Provides “Maxim-size” large window operation
- Allows larger applications to meet ADA requirements
- Certified to meet AAMA 901-07 cycle test at commercial rating
- Based on application, the Maxim and Encore systems provide reduced sash play - thus reducing the tendency of the window to “walk” in buffeting wind conditions when compared to EntryGard® and similar style operators.
- Time proven design.

LOW PROFILE AND REAR MOUNT OPERATOR STYLES AVAILABLE

Designed to fit a wider range of profiles and window types, Truth’s Maxim Operators design options greatly increase the mounting stability of the system.

While sill mounting is standard, dual-axis mounting (sill and rear mounting

in same operator) is available on certain models for companies manufacturing both wood & vinyl windows. Other benefits include:

- Easily mounts to thin wall profiles such as fiberglass, aluminum, and steel
- Increases gasket compression resulting in enhanced water and air tightness on rear mount.

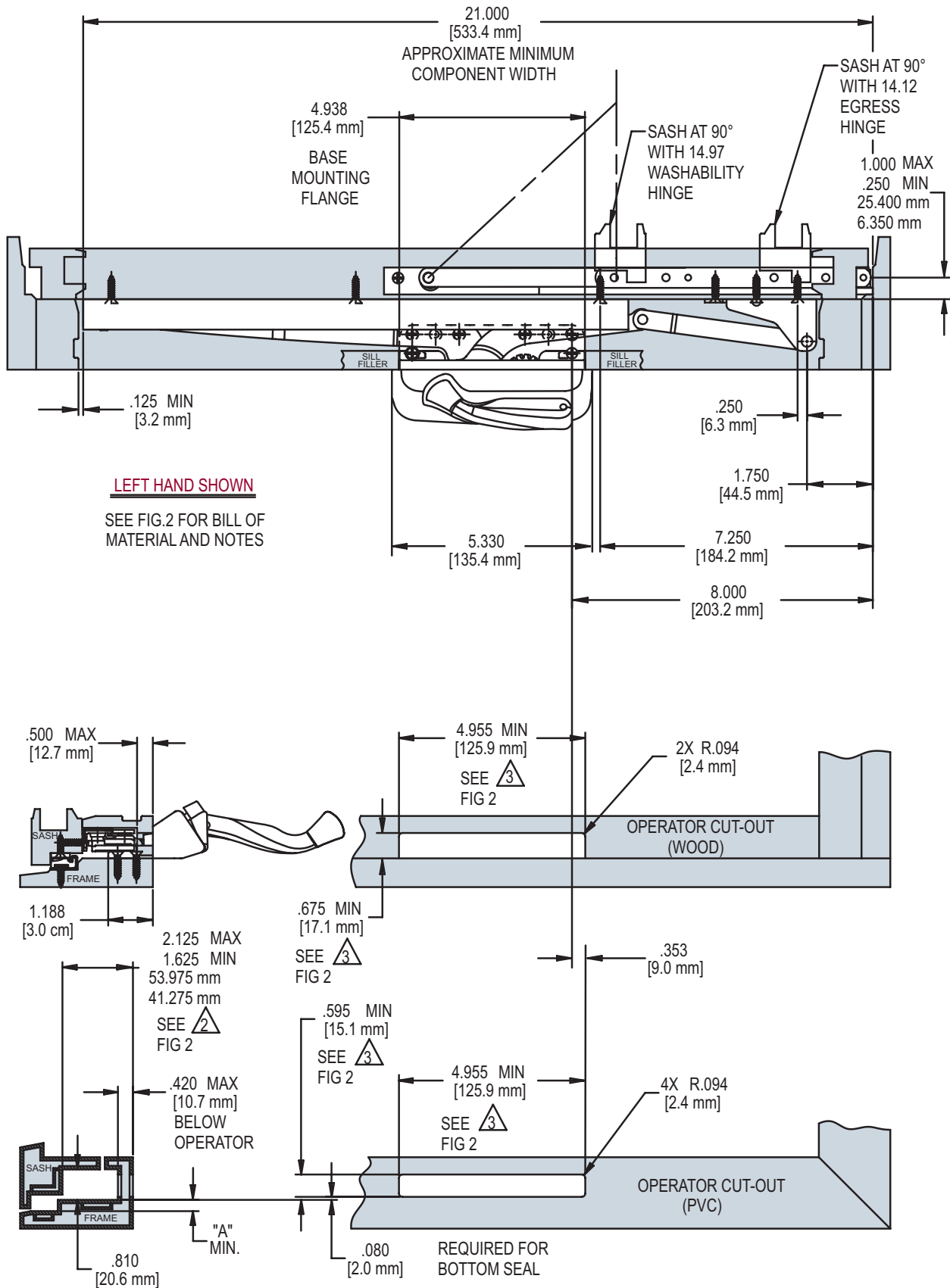
PRODUCT APPLICATION ASSISTANCE:

If you are designing a new window profile, or are having difficulty selecting hardware for your window, please contact Truth. Our highly trained Technical Service Staff can assist you with the selection of the appropriate hardware to meet your performance requirements, as well as providing personalized application drawings.

LOGO OPTIONS:

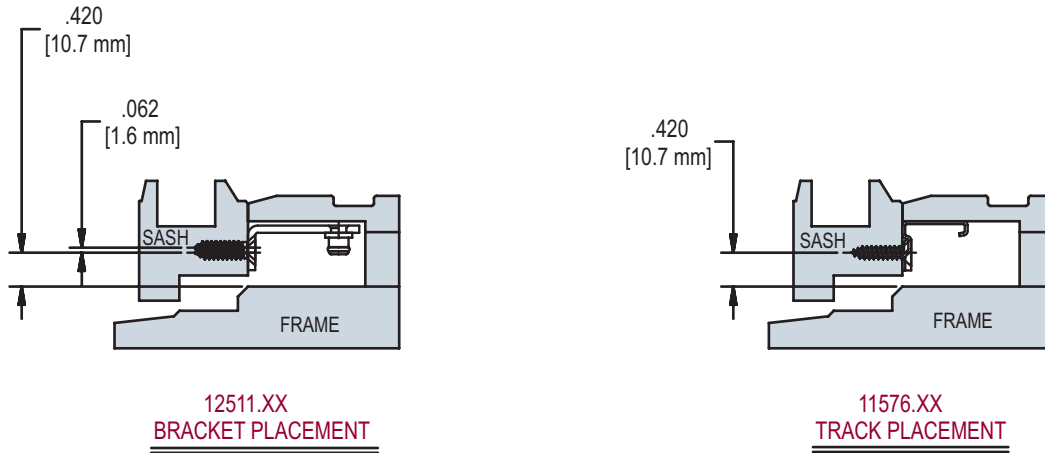
Have you considered personalizing your window? Contact Truth for further details on how you can add your own “signature” to the Maxim handle and cover.

FIG. 1 APPLICATION OF ENCORE DUAL ARM OPERATOR (SILL MOUNT VERSION)



ENCORE™ DUAL ARM OPERATOR (SILL MOUNT)

FIG. 2 APPLICATION OF ENCORE DUAL ARM OPERATOR CONTINUED (SILL MOUNT VERSION)



HARDWARE SHOWN FOR LEFT HAND WINDOW, SEE FIG.1

PART NUMBER	DESCRIPTION
50.10.00.011	DUAL ARM OPERATOR
12511.XX	STUD BRACKET
11576.XX	TRACK ASSEMBLY
14.97.00.XXX	WASHABILITY HINGE
12614.XX	TANGO HANDLE/COVER PACK
32658	GASKET (PVC)

HINGE	"A"
14.97.00.XXX	.300 [7.6 mm]
14.12.00.XXX	
OTHER 14 SERIES CASEMENT HINGES	.250 [6.4 mm]

NOTES:

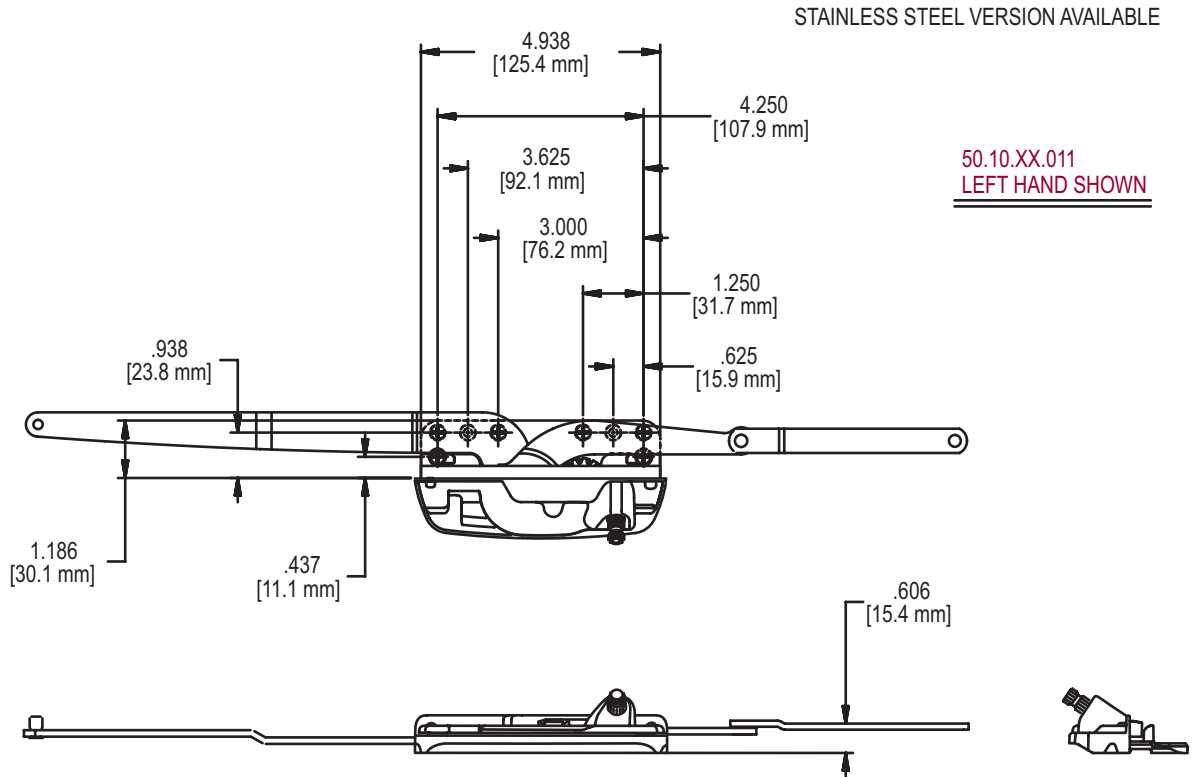
1. STUD BRACKET 12510.XX AND 12511.XX REQUIRES THE SAME MOUNTING LOCATION FOR BOTH THE ENCORE DUAL ARM OPERATOR AND THE ENCORE DYAD OPERATOR.

2. STUD BRACKET 12510.XX AND 12511.XX MAY NOT FIT IF 2.125/1.625 DIMENSION IS LESS THAN 1.875. CONTACT TRUTH FOR RECOMMENDATIONS.

3. HOLD THIS DIMENSION AS CLOSE TO THE MINIMUM AS MANUFACTURING TOLERANCES ALLOW. A CLOSE FITTING CUT-OUT HELPS TO STABILIZE THE OPERATOR AGAINST ROCKING

4. GASKET 32658 IS REQUIRED ON PVC AND METAL PROFILES FOR AN IMPROVED AIR AND WATER SEAL

FIG. 3 ENCORE DUAL ARM OPERATOR (SILL MOUNT VERSION)

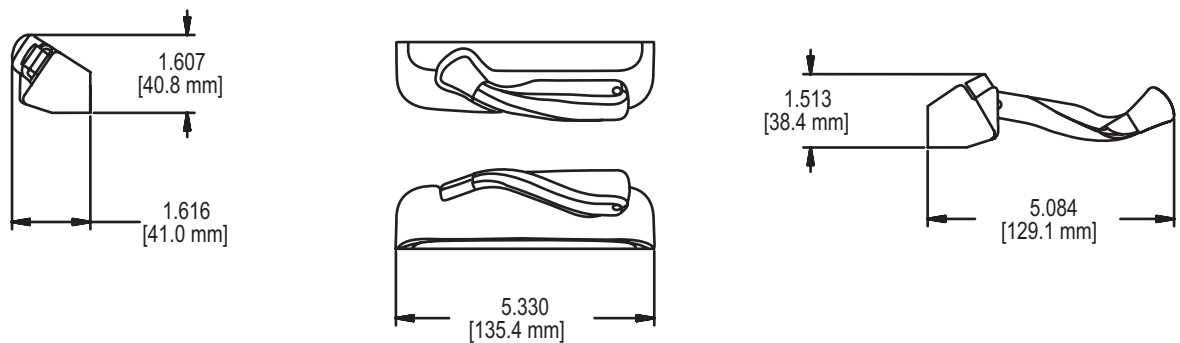


RECOMMENDED SCREWS:

(QTY 6)(PN 19240.XX)#8 X 1 FLAT HEAD SHEET METAL SCREW (SEE TRUTH TIPS FOR MORE INFORMATION)

(QTY 2)FOR REAR MOUNT:#8-32 X 3/8 PAN HEAD MACHINE SCREW PN 19545.XX

FIG. 4 ENCORE TANGO HANDLE/COVER 12614.XX(LH) (SHOWN), 12616.XX(RH)



ENCORE™ DUAL ARM OPERATOR (SILL MOUNT)

FIG. 5 BACK PLATE 21969.92

FOR USE WITH
51.12 REAR MOUNT
VERSION ONLY

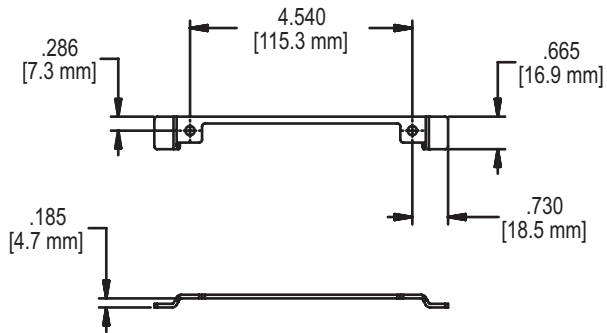


FIG. 6 TRACK & SLIDER ASSEMBLY 11576.XX

STAINLESS STEEL VERSION AVAILABLE

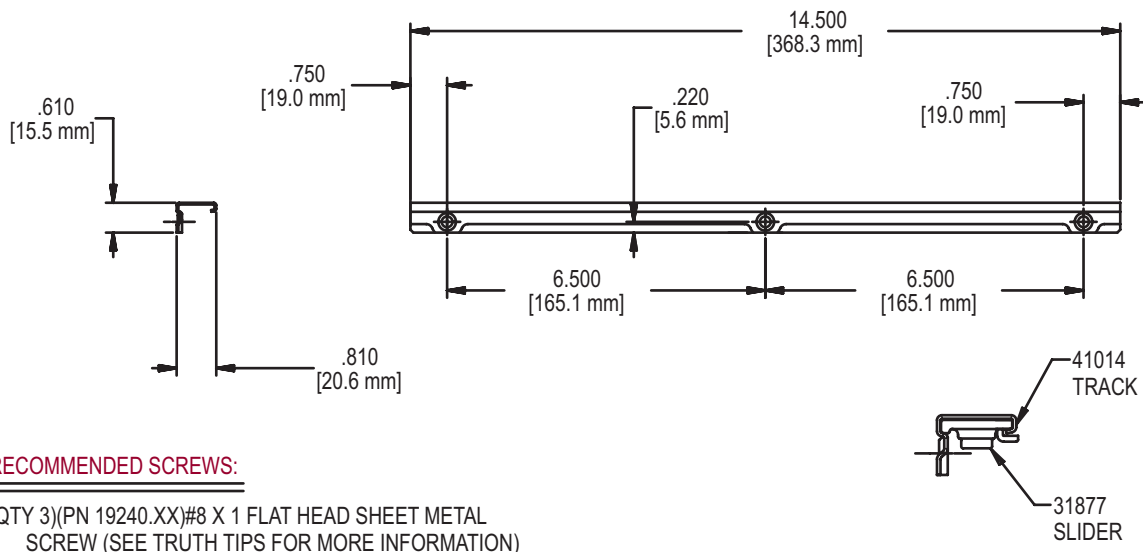


FIG. 7 STUD BRACKET 12511.XX(LH) (SHOWN) 12510.XX(RH)

STAINLESS STEEL VERSION AVAILABLE

HAND OF BRACKET DOES NOT
NECESSARILY MATCH HAND
OF OPERATOR

RECOMMENDED SCREWS:

(QTY 3)(PN 19240.XX)#8 X 1 FLAT HEAD SHEET METAL SCREW (SEE TRUTH TIPS FOR MORE INFORMATION)

